

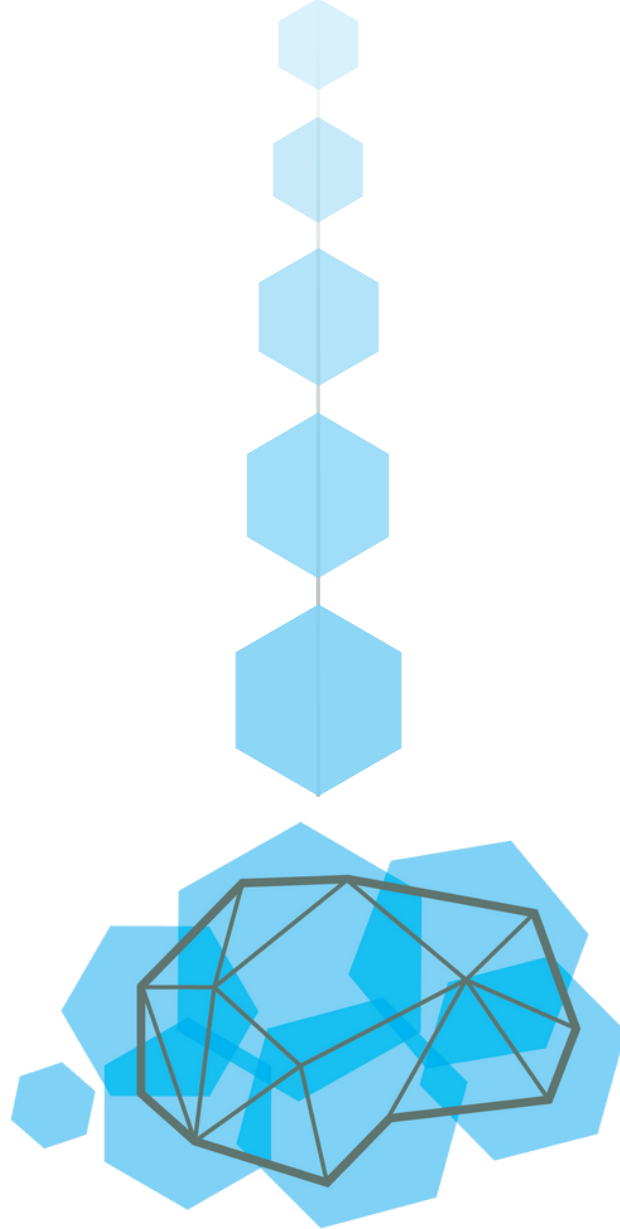


adēpsy

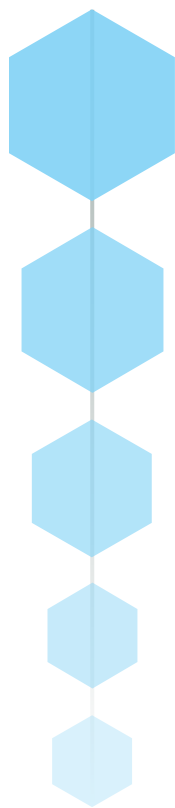
association des étudiant·e·x·s
de psychologie

Survival Kit for Mobility-IN students

University of Geneva



adēpsy





Important Contact Information

ADEPSY (Association Des Étudiant-es en Psychologie, University of Geneva)

- Students' Association in the section of Psychology.
- Location : Office 4195, Uni-Mail 4th floor
- Permanence : See our website
- Phone : 0041 22 379 90 98
- E-mail : adepsy@unige.ch
- Facebook : ADEPSY – Association Des Etudiants en Psychologie
- Instagram : @adepsyunige
- LinkedIn : ADEPSY
- Website : <http://www.asso-etud.unige.ch/adepsy>

CUAE (Association faîtière des associations d'étudiant-es et syndicat des étudiant-es, University of Geneva)

- Umbrella Association of UNIGE, present for all issues, especially in case of unsatisfactory results
- Location : 102 bd Carl-Vogt 1205 Genève (near the Nadir room)
- Phone : 0041 22 379 87 97
- E-mail : cuae@unige.ch
- Website : <https://cuae.ch/>

Psychology Students' Secretariat

- Mrs Anne JAQUIER, person in charge for Mobility In students
- Phone : 0041 22 379 90 17
- Location : Office 3103, Uni Mail 3rd floor
- Permanence : Monday and Wednesday 9:30 a.m. to 12:15 a.m.
Tuesday (Phone) 9:30 a.m. to 12:15 a.m.
- See up to date info here :
<https://www.unige.ch/fapse/etudiants/secretariat/>

Academic Advisor, Section of Psychology

- Mrs Vera KOTTE
 - Location : Office 3125, Uni Mail 3rd floor
 - Phone : 0041 22 379 10 26
 - E-mail : Vera.Kotte@unige.ch
- Permanence : Monday (Phone) from 2 p.m. to 4 p.m.
Wednesday from 10 a.m. to 12 a.m.
- See up to date info here :
<https://www.unige.ch/fapse/etudiants/conseilleres/>

Important Dates and Timings



Exam sessions

- Fall semester : January 16 to February 4, 2023
- Spring semester : From May 30 to June 17, 2023
- Retake session : From August 21 to September 9, 2023

Courses registration dates

- Fall semester : From Monday 3rd to Monday 10th October, 20 p.m.
- Spring semester : From Monday 6th to Monday 13th March, 20 p.m.
 - Note : always check the official information on the FPSE website

Holidays

- Independent study week : November 7 to 11, 2022
- End of fall semester courses : December 23, 2022
- Beginning of spring semester courses : February 20, 2023
- Easter break : April 7 to April 16, 2023
- End of annual courses and spring semester : May 26, 2023

FPSE Library

- Location : Uni Mail 1st floor (there are other sites. See link below)
- Phone : (0041) 22 / 379.92.92
- E-mail: biblio-pse@unige.ch
- Opening hours : Monday to Friday from 8 a.m. to 10 p.m.;
Saturday and Sunday from 9 a.m. to 6 p.m.
Holidays: 9 a.m. to 6 p.m. (usually)
- Website : <https://www.unige.ch/biblio/fr/>



UNIGE Online Platforms for Learning

Infoetu

- A website created by students for students where you can find additional information on for instance, How to print? How to recharge your printing account? How to digitalise? etc...
- Email: moniteursfpse@unige.ch
- Website : <https://www.unige.ch/infoetu/>

Mediaserver

- Many courses at Geneva University are recorded and available to listen to after the live teaching. These videos can be found on the Mediaserver platform on where, by searching the name of the professor or the name of the course, you can find the videos with the slides and the audio explanations.
- On Mediaserver, once you log in with your university username and password, you have access to the videos and have the possibility to accelerate or decelerate the speed, play and pause as many times as you want as well as download and save the video.
- Website: <https://mediaserver.unige.ch>

E-mail

- When you are registered as a student at the University of Geneva, you automatically get an email address with a username and password. Any communication from the university will be sent to this address.
- Website: <https://outlook.office.ch>

Moodle

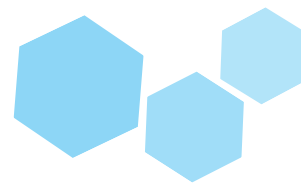
- Moodle is the main platform used by the professors to share all their resources with the students. These resources include the lectures' slides, articles, videos, quizzes, helpful documents, discussion forums, timetables etc...
- You can also submit any reports or group projects due in through this platform.
- You can access this platform with your university username and password. To find your class, in the search bar, you can either write the name of your professor, the name of the course or the code of your class (for instance: "Psychologie Clinique" is 74155). The last method is usually the quickest one to find the lecture you are looking for.
- Website: <https://moodle.unige.ch>

Courses timetable

- All the information regarding the different courses (day of the week, time, semester, professor, description etc...) are available on a single platform. By selecting your Faculty, section and year of study, you can construct your timetable with your compulsory courses and all your option courses.
- Website:
<https://wwi.unige.ch/cursus/programme-des-cours/web/home>

UNIGE Portal

- This platform is very important as it is where you can find all the information regarding your exam dates, your registration attestations, payment information and exam results.
- In addition, you can also find information on student jobs and career counselling, sports and culture, student integration, workshops for successful studies, as well as details on the psychological counselling centre and university social information office.
- You can also charge your multiservice university card to be able to print at University, access the maps for all the classrooms and lecture halls in the different buildings, contact human resources, enjoy the University boutique and much more!
- Website: <https://portail.unige.ch/>



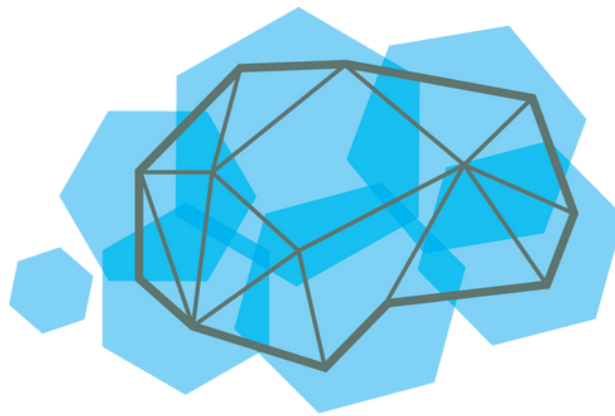
INTRANET

- This platform allows you to access different forms you may need. Option courses, part-time studies, equivalences, absence due to military service, as well as information on MOBILITY IN students. It's on this platform that MOBILITY IN students register officially their courses !
- Websites: <https://plone.unige.ch/etufpse/>

*We wish you a wonderful time in
Geneva, to build memories that last a
lifetime.*

Here for you,

ADEPSY



adēpsy

