

FEUILLE DE CODAGE PROFESSEUR

Légende

Contenus

M savoirs musicaux
 MT : savoirs techniques
 MI : interprétation
 ML : lecture de partition
 MH : Etude (préparation aux devoirs)
D savoirs didactiques
 DI : apprentissage (learning)
 Dpl : planification
 Dr : conduite de leçon

Définitions

Dt : Définition de la tâche
 Dd : définition discursive

De+ : Définition par un exemple
 De- : Définition par un contre-exemple
 Dp : pointing définitions
 Dm : définitions par métaphores

Instrument

Chant
 Violon
 Cuivre
 Violoncelle
 Piano
 IJD
 Harpe

Formateur	Etudiant	Etudiant 2	Institution	Instrument	Temps (jours)	Date	Durée	Duo de chercheurs	MT	MI	ML	MH	DL	Dpl	Dr	Dt	Dd	De+	De-	Dp	Dm
TI	C	oui	IA	Harpe	F1	12.01.2015	16'51	GT-RR	14	6	0	1	12	10	19	7	33	1	0	0	0
				Harpe	F2	21.02.2015	23'41	GT-RR	11	9	0	4	18	8	24	0	27	2	0	6	0
				Harpe	F3	16.03.2015	19'	GT-RR	7	2	2	2	4	6	11	4	11	0	0	1	0
				Harpe	F4	28.04.2015	18'04	GT-RR	9	4	0	2	9	5	18	2	18	5	1	7	0
					moyenne				10.25	5.25	0.5	2.25	10.75	7.25	18	3.25	22.25	2	0.25	3.5	0

pourcents savoirs

Temps (jours)	MT	MI	ML	MH	DL	Dpl	Dr	occurrences savoirs
F1	22.5806	9.7	0	1.6129	19.3548	16.13	30.65	62
F2	14.8649	12	0	5.4054	24.3243	10.81	32.43	74
F3	20.5882	5.9	5.882	5.8824	11.7647	17.65	32.35	34
F4	19.1489	8.5	0	4.2553	19.1489	10.64	38.3	47
moyenne	19.2956704	9.06	1.470588	4.288995	18.6482013	13.8063	33.4321	

pourcents gestes

Temps (jours)	Dt	Dd	De+	De-	Dp	Dm	occurrences gestes
F1	17.0732	80	2.439	0	0	0	41
F2	0	77	5.714	0	17.1429	0	35
F3	25	69	0	0	6.25	0	16
F4	6.06061	55	15.15	3.0303	21.2121	0	33
moyenne	12.0334442	70.2	5.826206	0.757576	11.1512446	0	

FEUILLE DE CODAGE ETUDIANT

Légende

Contenus
M savoirs musicaux
MT : savoirs techniques
MI : interprétation
MH : Etude (préparation aux devoirs)
ML: Lecture de partition

Définitions

Dt : Définition de la tâche

Dd : définition discursive

De+ : Définition par un exemple

De- : Définition par un contre-exemple

Dp : pointing définitions

Dm : définitions par métaphores

Instrument

Chant
Violon
Cuivre
Violoncelle
Piano
IJD
Harpe

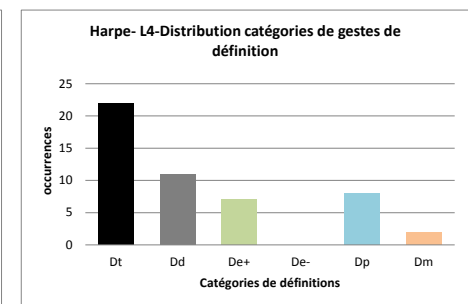
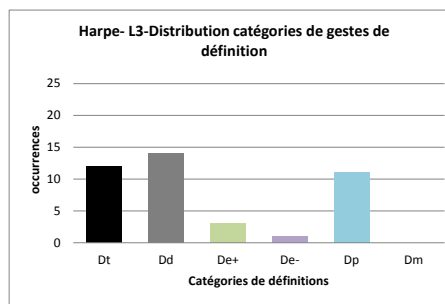
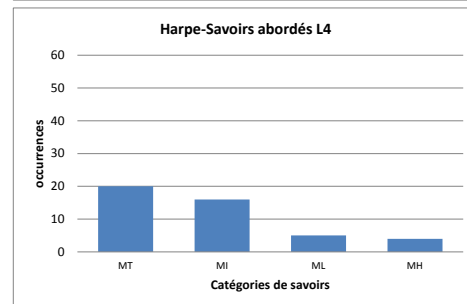
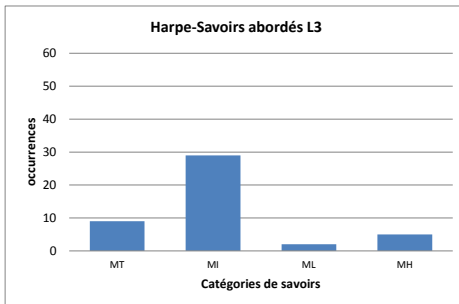
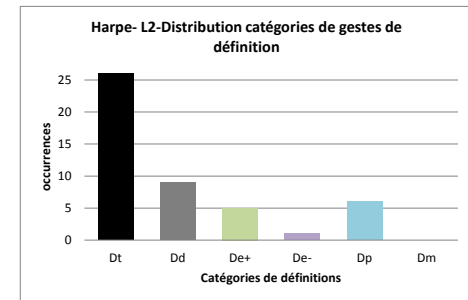
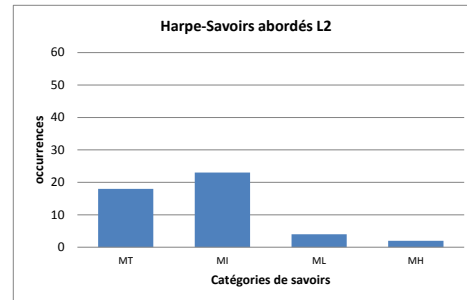
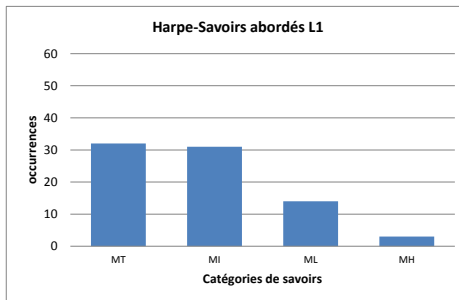
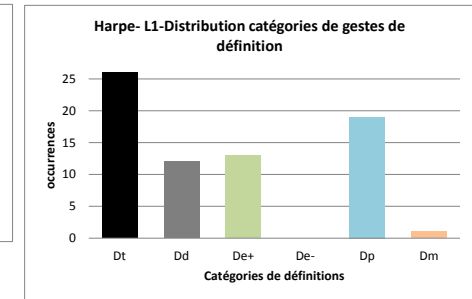
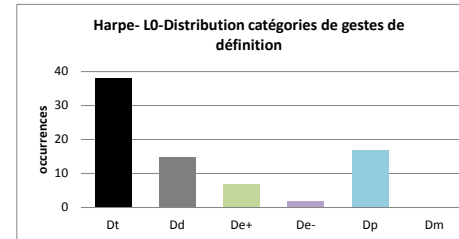
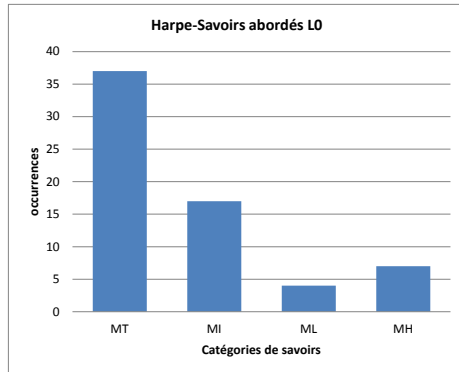
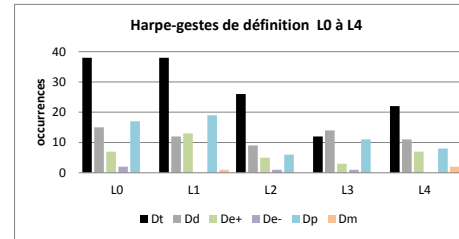
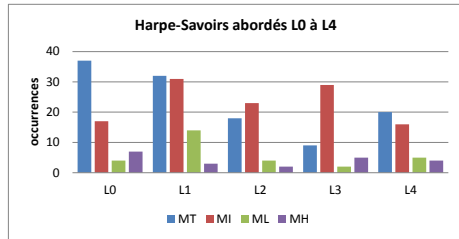
Etudiant	Etudiant 2	Formateur	Institution	Instrument	Temps (jours)	Date	Durée	Duo de chercheurs	MT	MI	ML	MH	Dt	Dd	De+	De-	Dp	Dm
C		TI	IA	Harpe	L0	08.12.2014	34'55	GT-RR	37	17	4	7	38	15	7	2	17	0
				Harpe	L1	06.02.2015	31'00	GT-RR	32	31	14	3	38	12	13	0	19	1
				Harpe	L2	12.05.2015	30'32	GT-RR	18	23	4	2	26	9	5	1	6	0
				Harpe	L3	15.05.2015	2'26	GT-RR	9	29	2	5	12	14	3	1	11	0
				Harpe	L4	27.05.2015	32'00	GT-RR	20	16	5	4	22	11	7	0	8	2

pourcents savoirs

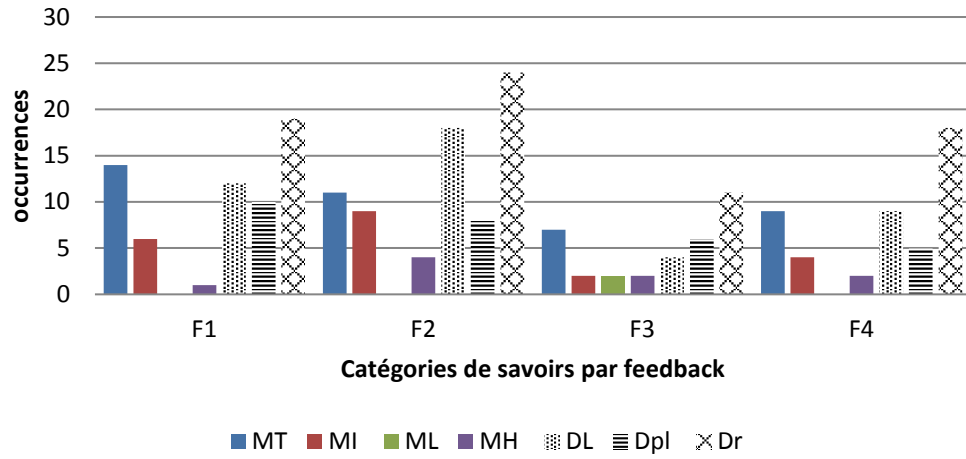
Temps (jours)	MT	MI	ML	MH	nb occurrences
L0	56.9230769	26.1538	6.15385	10.76923	65
L1	40	38.75	17.5	3.75	80
L2	38.2978723	48.9362	8.51064	4.255319	47
L3	20	64.4444	4.44444	11.11111	45
L4	44.4444444	35.5556	11.1111	8.88889	45
moyenne	39.93307874	42.7680033	9.544008	7.75409984	

pourcents gestes

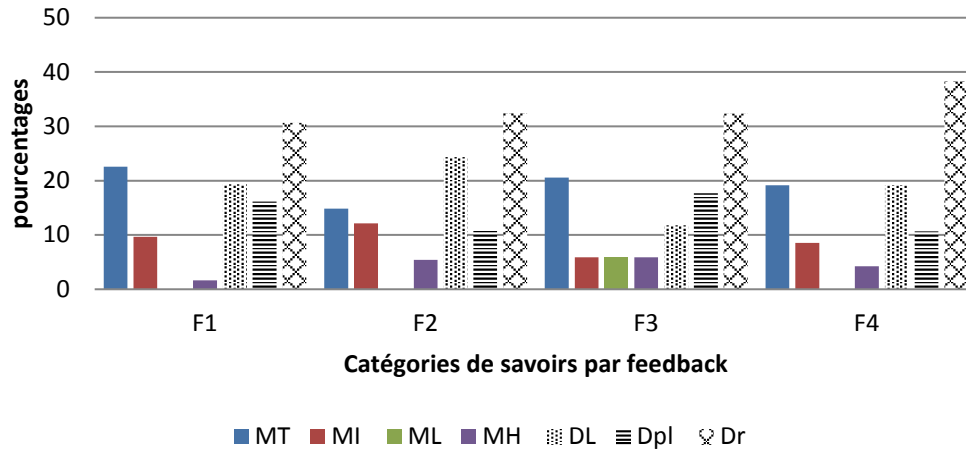
Temps (jours)	Dt	Dd	De+	De-	Dp	Dm	nb occurrences
L0	48.10127	18.98734	8.860759494	2.53164557	21.51898734	0	79
L1	45.78313	14.45783	15.6626506	0	22.89156627	1.204819277	83
L2	55.31915	19.14894	10.63829787	2.127659574	12.76595745	0	47
L3	29.26829	34.14634	7.317073171	2.43902439	26.82926829	0	41
L4	44	22	14	0	16	4	50
moyenne	44.49436799	21.74809015	11.29575623	1.419665907	20.00115587	1.040963855	



Harpe-Distribution des savoirs abordés F1 à F4



Harpe-Distribution des savoirs abordés F1 à F4 en pourcents



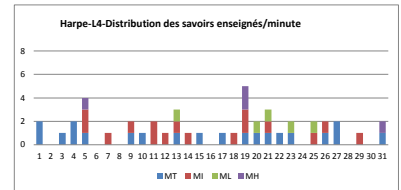
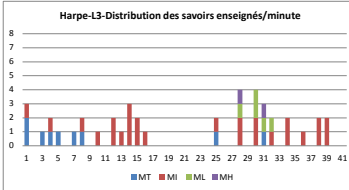
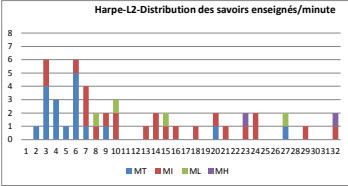
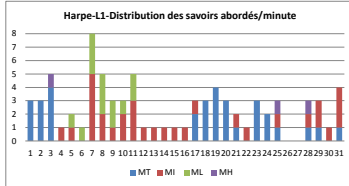
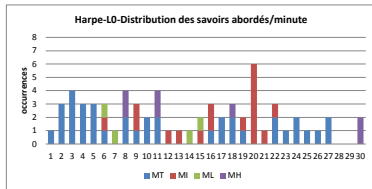
Harpe-LO					
minutes	MT	MI	ML	MH	
0.00	1	0	0	0	0
1.00	3	0	0	0	0
2.00	4	0	0	0	0
3.00	3	0	0	0	0
4.00	3	0	0	0	0
5.00	1	1	1	0	0
6.00	0	0	1	0	0
7.00	2	0	0	2	0
8.00	1	2	0	0	0
9.00	2	0	0	0	0
10.00	2	0	0	2	0
11.00	0	1	0	0	0
12.00	0	1	0	0	0
13.00	0	0	1	0	0
14.00	0	1	1	0	0
15.00	1	2	0	0	0
16.00	2	0	0	0	0
17.00	2	0	0	1	0
18.00	1	1	0	0	0
19.00	0	6	0	0	0
20.00	0	1	0	0	0
21.00	2	1	0	0	0
22.00	1	0	0	0	0
23.00	2	0	0	0	0
24.00	1	0	0	0	0
25.00	1	0	0	0	0
26.00	2	0	0	0	0
27.00	0	0	0	0	0
28.00	0	0	0	0	0
29.00	0	0	0	2	0
	37	17	4	7	

Harpe- L1					
minutes	MT	MI	ML	MH	
0.00	3				
1.00	3				
2.00	4		0	1	
3.00		1			
4.00		1	1	0	
5.00			1	0	
6.00		5	4	0	
7.00		2	3	0	
8.00		1	2	0	
9.00		2	1	0	
10.00		3	2	0	
11.00		1			
12.00		1			
13.00		1			
14.00		1			
15.00		1			
16.00		2	1		
17.00		3			
18.00		4			
19.00		3			
20.00		1	1		
21.00		1	1		
22.00		3			
23.00		2			
24.00		1	1	0	1
25.00					
26.00					
27.00		1	1	0	1
28.00		1	2		
29.00		1	1		
30.00		1	3		
	32	31	14	3	

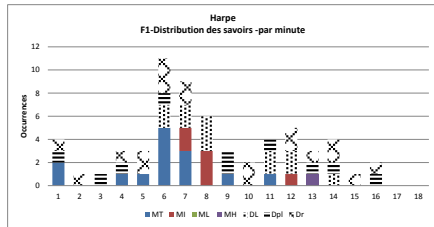
Harpe-L2					
minutes	MT	MI	ML	MH	
0.00					
1.00		1			
2.00		4	2		
3.00		3			
4.00		1			
5.00		5	1		
6.00		1	3		
7.00			1	1	0
8.00		1	1		
9.00			2	1	0
10.00					
11.00					
12.00			1		
13.00			2		
14.00			1	1	0
15.00			1		
16.00					
17.00			1		
18.00					
19.00		1	1		
20.00			1		
21.00					
22.00			1	0	1
23.00			2		
24.00					
25.00					
26.00		1		1	
27.00					
28.00			1		
29.00			2		
30.00					
31.00			1		1
	18	23	4	2	

Harpe-L3					
minutes	MT	MI	ML	MH	
0.00		2	1		
1.00					
2.00		1			
3.00		1	1		
4.00		1			
5.00					
6.00		1			
7.00		1	1		
8.00		1			
9.00			1		
10.00					
11.00			2		
12.00			1		
13.00			3		
14.00			2		
15.00			1		
16.00					
17.00					
18.00					
19.00					
20.00					
21.00					
22.00					
23.00					
24.00		1	1		
25.00					
26.00					
27.00			2	1	1
28.00					
29.00			2	2	
30.00		1	1	1	1
31.00			1	1	1
32.00					
33.00			2		
34.00					
35.00			1		
36.00					
37.00			2		
38.00			2		
39.00					
40.00					
	9	26	5	2	

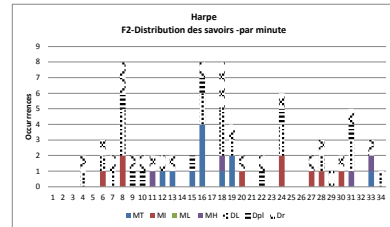
Harpe- L4						
minutes	MT	MI	ML	MH		
0.00		2				
1.00						
2.00		1				
3.00		2				
4.00		1	2	0	1	
5.00						
6.00			1			
7.00						
8.00			1	1		
9.00			1			
10.00			2			
11.00			1			
12.00			1	1	0	
13.00			1			
14.00			1			
15.00						
16.00			1			
17.00			1			
18.00			1	2	0	2
19.00			1	1	0	
20.00			1	1	1	0
21.00			1			
22.00			1		1	0
23.00						
24.00				1	1	0
25.00			1	1		
26.00			2			
27.00						
28.00				1		
29.00						
30.00			1	0	1	
	20	16	5	4		



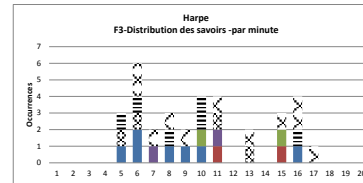
Harpe-F1								
minutes	MT	MI	ML	MH	DL	Dpl	Dr	
0.00			0				1	1
1.00	2							1
2.00							1	
3.00	1						1	1
4.00	1							2
5.00	5				2	1	3	
6.00	3	2			2			2
7.00		3			3			
8.00	1					2		
9.00								2
10.00	1				2	1		
11.00		1			2			2
12.00				1		1		1
13.00					1	1		2
14.00								1
15.00							1	1
16.00								
17.00								
	14	6	0	1	12	10	19	



Harpe-F2								
minutes	MT	MI	ML	MH	DL	Dpl	Dr	
0.00			0					
1.00								
2.00								
3.00					1		1	
4.00								
5.00		1			1			
6.00					1		1	
7.00		2			3	1	2	
8.00						1	1	
9.00						1	1	
10.00				1				
11.00		1						1
12.00		1						1
13.00								
14.00		1				1		
15.00		4			2	1	1	
16.00								
17.00		1		1	3		3	
18.00		2			1		1	
19.00		1						1
20.00								
21.00							1	1
22.00								
23.00		2			2	1	1	
24.00								
25.00								
26.00			1					1
27.00		1				1		1
28.00								1
29.00			1					1
30.00				1	2	1	1	
31.00					1			1
32.00		1						1
33.00						1		
	11	9	0	4	18	8	24	



Harpe-F3								
minutes	MT	MI	ML	MH	DL	Dpl	Dr	
0.00								
1.00								
2.00								
3.00								
4.00	1				1	1		
5.00	2					1	1	2
6.00				1				1
7.00	1					1	1	
8.00	1							1
9.00	1		1			2		
10.00		1			1			1
11.00								
12.00					1			1
13.00								
14.00			1					1
15.00	1	1	1			1	2	
16.00								1
17.00								
18.00								
19.00								
	7	2	2	2	4	6	11	



Harpe-F4								
minutes	MT	MI	ML	MH	DL	Dpl	Dr	
0.00								
1.00								
2.00					1			
3.00								1
4.00								1
5.00								1
6.00	1					1	1	1
7.00	2			1				1
8.00								
9.00	2							
10.00								
11.00	2				2	1	2	
12.00	1					1		1
13.00						1		2
14.00								1
15.00								
16.00								
17.00								1
18.00								1
19.00						1	1	1
20.00								
21.00					1			2
22.00								
23.00		1						1
24.00								
25.00								
26.00								
27.00								1
28.00			1				1	1
29.00			1					1
30.00	1							1
31.00								
	9	4	0	2	9	5	18	

