

PROJECT: TP-SGF


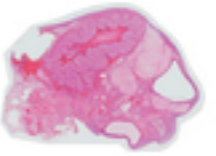







- Images
- Annotations
- Activity
- Information

Images

Add image

Search

Show filters

Overview	Name	Magnification	Manual Annotations	Analysis Annotations	Reviewed Annotations	
	SGF 04_2.tiff	40	1206	0	0	<a href="#">Open</a>
	SGF 06.tiff	40	446	0	0	<a href="#">Open</a>
	SGF 07.tiff	40	146	0	0	<a href="#">Open</a>
	SGF 08.tiff	40	576	0	0	<a href="#">Open</a>
	SGF 09.tiff	40	372	0	0	<a href="#">Open</a>
	SGF_11 (1e).tiff	40	129	0	0	<a href="#">Open</a>
	SGF 15_2.tiff	40	339	0	0	<a href="#">Open</a>
	SGF 16.tiff	40	349	0	0	<a href="#">Open</a>
	SGF 20.tiff	40	214	0	0	<a href="#">Open</a>

ANNOTATION TYPE

IMAGES

Manual Annotations

All

MEMBERS

FROM

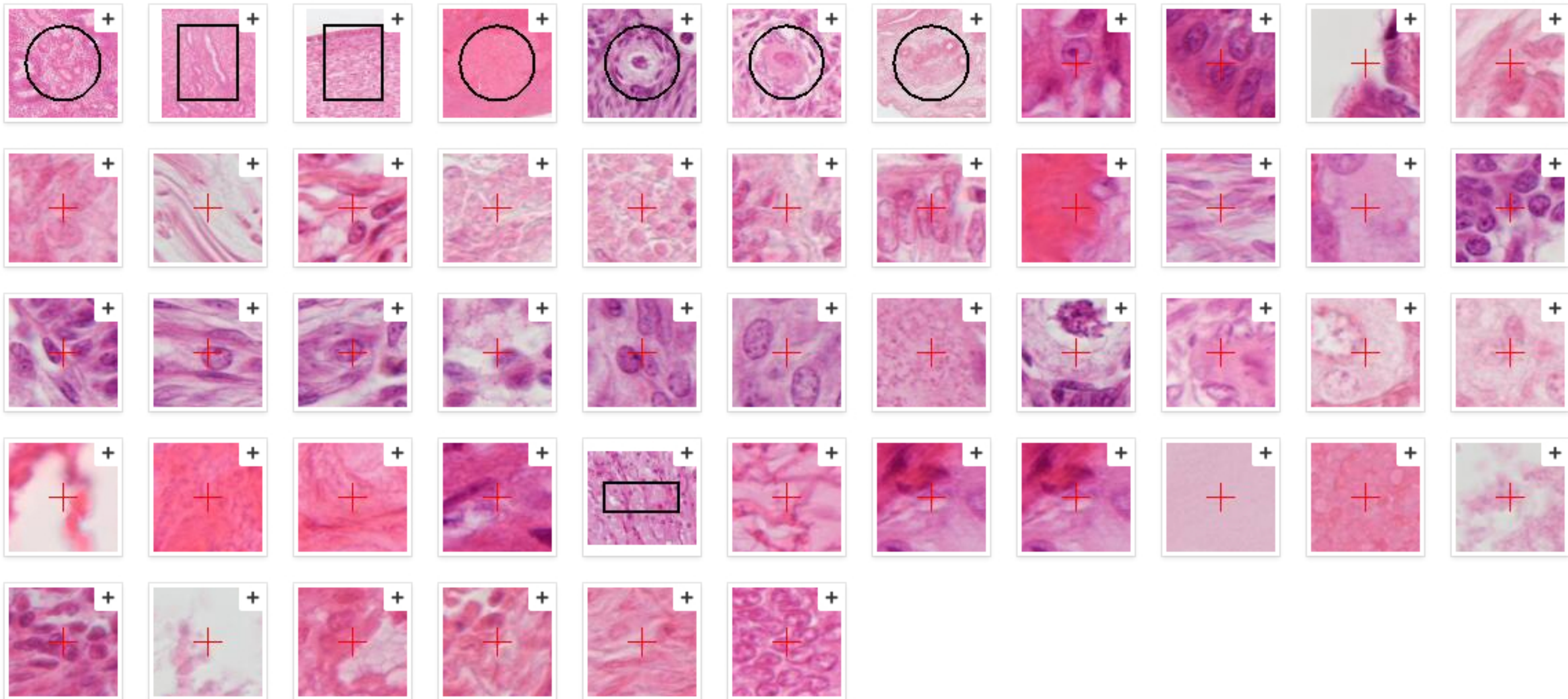
TO

All

Select a date

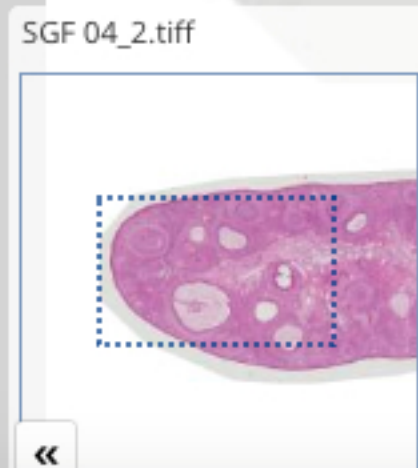
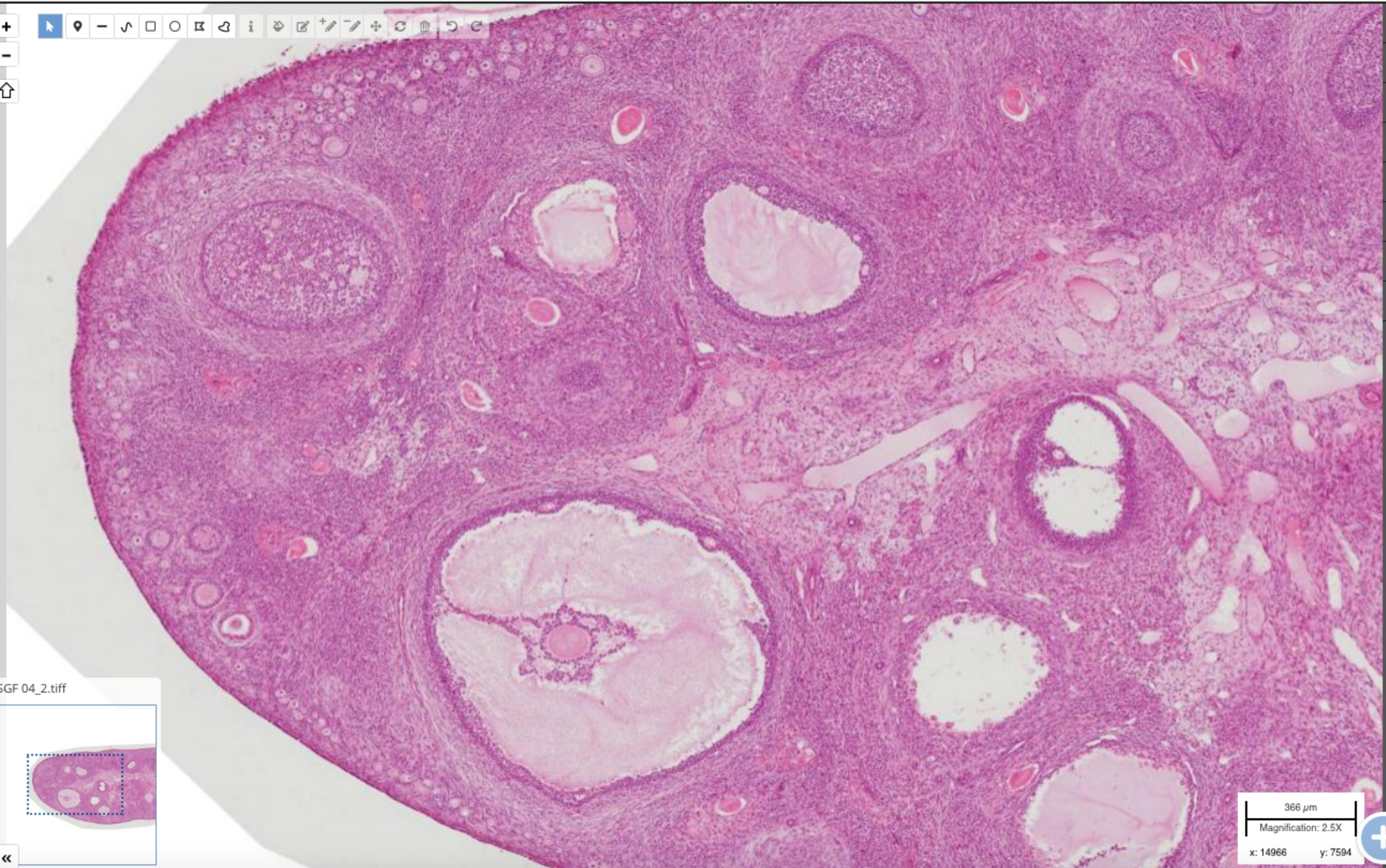
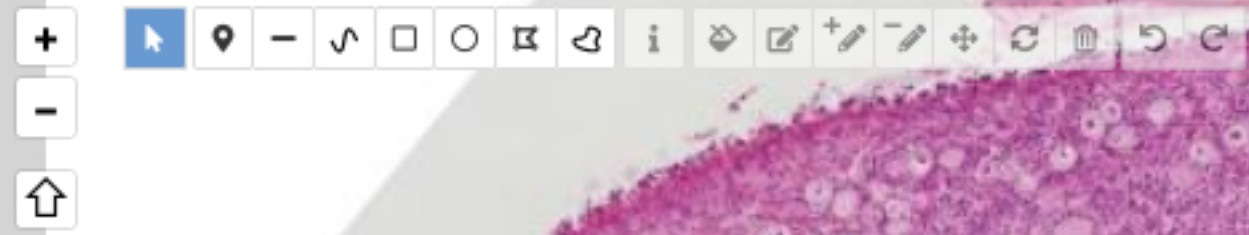
Select a date

NO TERM (4131)



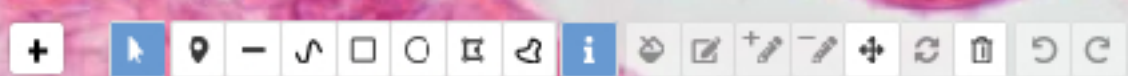
PROJECT: TP-SGF

- Images
- Annotations
- Activity
- Information



366  $\mu$ m  
 Magnification: 2.5X  
 x: 14966 y: 7594





CURRENT SELECTION

Description

cellule sécrétoire: noyau plus haut  
Reconnaitre appareil genital feminin car cellule cilié  
et secretoire

Edit

Properties

Add

Attached files

No attached file. Add

Created by



Created on

Nov 26, 2019

Center view on this annotation

View crop

Copy URL

Comments (0)

Delete

SGF 12.liff

