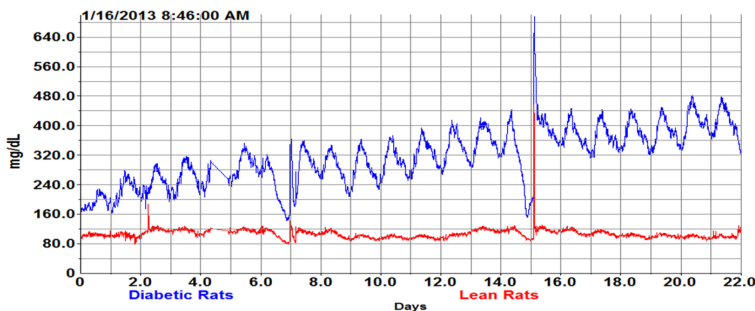
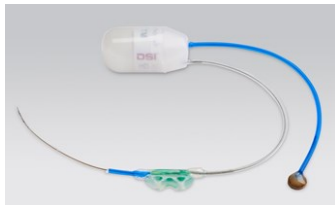
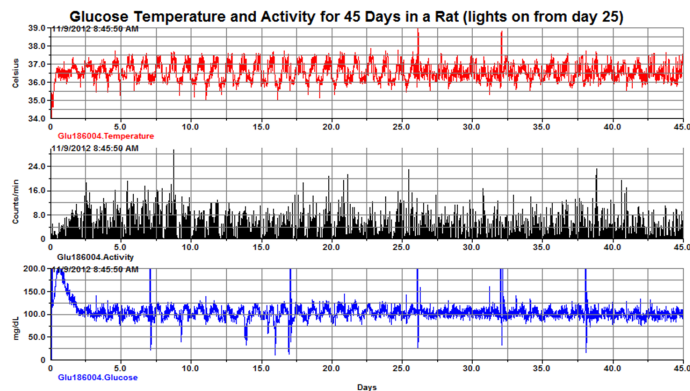


## Continuous Glucose Telemetry : Applications

- See what you are missing !
- Discover a new solution and the applications of telemetry in your area of research
- Discover new recording possibilities, investigate entirely new research applications!

Tuesday September 12, from 3pm to 4 pm  
CMU — Geneva — Room A04.3018



## Agenda

- Introduction
- Advantages of telemetry monitoring compared to other techniques. Applications in diabetes, metabolism, phenotyping...
- Data examples : Rat and mouse models
- Animal welfare, data quality and cost saving considerations will be addressed.
- Discussion Q & A

This event is accredited for 1 hour of continuous education by the DGS

Please register if you plan to attend :

[scaradec@datasci.com](mailto:scaradec@datasci.com) - 06 89 28 42 37