



UNIVERSITÉ  
DE GENÈVE

## PRESS RELEASE

Geneva | January 31<sup>th</sup>, 2020



Hôpitaux  
Universitaires  
Genève

# Could resetting our internal clocks help control diabetes?

Researchers from UNIGE and HUG were able to demonstrate the link between disturbances of the circadian clocks in pancreatic cells and type 2 diabetes, then to correct these disturbances.

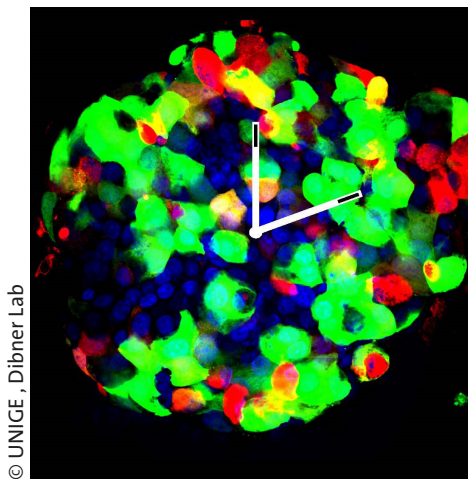
**The circadian clock system (from Latin “circa diem”, about a day) allows the organisms to anticipate periodical changes of geophysical time, and to adjust to these changes. Nearly all the cells in our body comprise molecular clocks that regulate and synchronize metabolic functions to a 24-hour cycle of day-night changes. Today, increasing evidence show that disturbances in our internal clocks stemming from frequent time zone changes, irregular working schedules or ageing, have a significant impact on the development of metabolic diseases in human beings, including type-2 diabetes. Such disturbances seem to prevent the proper functioning of the cells in the pancreatic islet that secrete insulin and glucagon, the hormones that regulate blood sugar levels. By comparing the pancreatic cells of type 2 diabetic human donors with those of healthy people, researchers at the University of Geneva (UNIGE) and at the University Hospitals of Geneva (HUG), Switzerland, were able to demonstrate, for the first time, that the pancreatic islet cells derived from the Type 2 Diabetic human donors bear compromised circadian oscillators. The disruption of the circadian clocks was concomitant with the perturbation of hormone secretion. Moreover, using clock modulator molecule dubbed Nobiletin, extracted from lemon peel, the researchers succeeded in “repairing” the disrupted cellular clocks and in partial restoring of the islet cell function. These results, published in the *Proceedings of the National Academy of Sciences* of the United States, provide a first insight into innovative approach for diabetes care.**

Two years ago, the team led by Charna Dibner, Principle Investigator in the Departments of Medicine and of Cell Physiology and Metabolism, and Diabetes Centre at UNIGE Faculty of Medicine, and at HUG, has already shown that in rodents the perturbation of pancreatic cellular clocks led to disrupted insulin and glucagon secretion, thus promoting the onset of diabetes. But what is the situation in human beings? “We had also previously observed that if the clocks of human pancreatic cells were artificially disrupted in the cellular culture in vitro, secretion of the key islet hormones - insulin and glucagon - was compromised,» says Volodymyr Petrenko, a researcher in Dr. Dibner’s lab and the first author of these publications. Hence our next step, that we report here, was to unravel whether the circadian rhythms were perturbed in human pancreatic islets in type 2 diabetes, and, if so, how would this perturbation affect the islet function.”

Using combined bioluminescence-fluorescence time-lapse microscopy, a technology that allows tracking the molecular clock activity in living cells very precisely over time, the scientists compared the behaviour of pancreatic cell of type-2 diabetic donors and those of healthy subjects throughout the day. “The verdict is indisputable”, says Char-na Dibner. The biological rhythms of the islet cells in type-2 diabetes exhibit both reduced amplitudes of circadian oscillations and poor synchronization capacity. «As a result, hormone secretion is no longer coordinated. Moreover, the defects in temporal coordination of insulin and glucagon secretion observed in patients with type-2 diabetes were comparable to those measured in healthy islet cells with artificially-disrupted circadian clock.”

### It’s all in the timing!

Circadian clocks represent the daily cycles governing the various cellular functions. There are several interlocking levels of synchronization of these clocks, the main one being light, which in particular regulates the central clock located in the cerebral hypothalamus. Like a conductor in the orchestra, it regulates peripheral clocks present in organs and cells. The latter are therefore partly centrally regulated, but function differently in each organ, and even in each cell, depending on their functions. “Pancreatic cells are also subject to the rhythm of fasting and food intake, and to a tight hormonal regulation”, says Char-na Dibner. “Coordinating all levels of regulation therefore allows the optimization of metabolic functions. Clocks deregulation in pancreatic islet leads to a compromised function: they are not anymore anticipating food-derived signals. Indeed, if you eat the same food but at night rather than during the day, you may gain weight much faster, due to a suboptimal response of your metabolism.”



© UNIGE, Dibner Lab

A Langerhans Islet with insulin-producing cells (in green), and glucagon-producing cells (in red). Cell nuclei in blue.

### Illustrations haute définition

### Setting the right time again

Step two of their research: the Geneva scientists used Nobiletin, a small clock modulator molecule - a natural ingredient of lemon peel whose impact on circadian clocks has been recently discovered - in order to resynchronize the clocks. “By acting on one of the core-clock components, it resets efficiently the amplitude of the oscillations in the human islets” says Volodymyr Petrenko. “And as soon as we got the clocks back in sync, we also observed an improvement in insulin secretion.”

“This is the first proof of principle that repairing compromised circadian clocks may help improving the function of the pancreatic islet hormone secretion”, says Charna Dibner. “We will continue by exploring this repair mechanism in vivo, first in animal models. Our society experiences epidemic growth in metabolic diseases, concomitant with shifted working and eating schedules, and lack of sleep. By re-synchronizing the perturbed molecular clocks, either by personalized eating and exercise schedules or with the help of clock modulator molecules, we hope to ultimately be able to provide an innovative solution to an epidemical metabolic problem affecting an ever-increasing proportion of the world’s population. .”

## contact

### **Charna Dibner**

Principle Investigator (MER)  
Department of Medicine  
Department of Cell Physiology and Metabolism  
Diabetes Centre  
Faculty of Medicine University of Geneva  
University Hospital of Geneva, HUG  
  
+41 22 379 59 34  
Charna.Dibner@unige.ch

### **Volodymyr Petrenko**

Senior postdoctoral scientist (MA)  
Department of Medicine  
Department of Cell Physiology and Metabolism  
Diabetes Centre  
Faculty of Medicine University of Geneva  
University Hospital of Geneva, HUG  
  
+ 41 22 379 58 13  
Volodymyr.petrenko@unige.ch

**DOI:** 10.1073/pnas.1916539117

**UNIVERSITÉ DE GENÈVE**  
**Communication Department**  
24 rue du Général-Dufour  
CH-1211 Geneva 4  
  
Tel. +41 22 379 77 17  
media@unige.ch  
www.unige.ch