

## 011: Sperm concentration (Neubauer vs CASA)

### Purpose

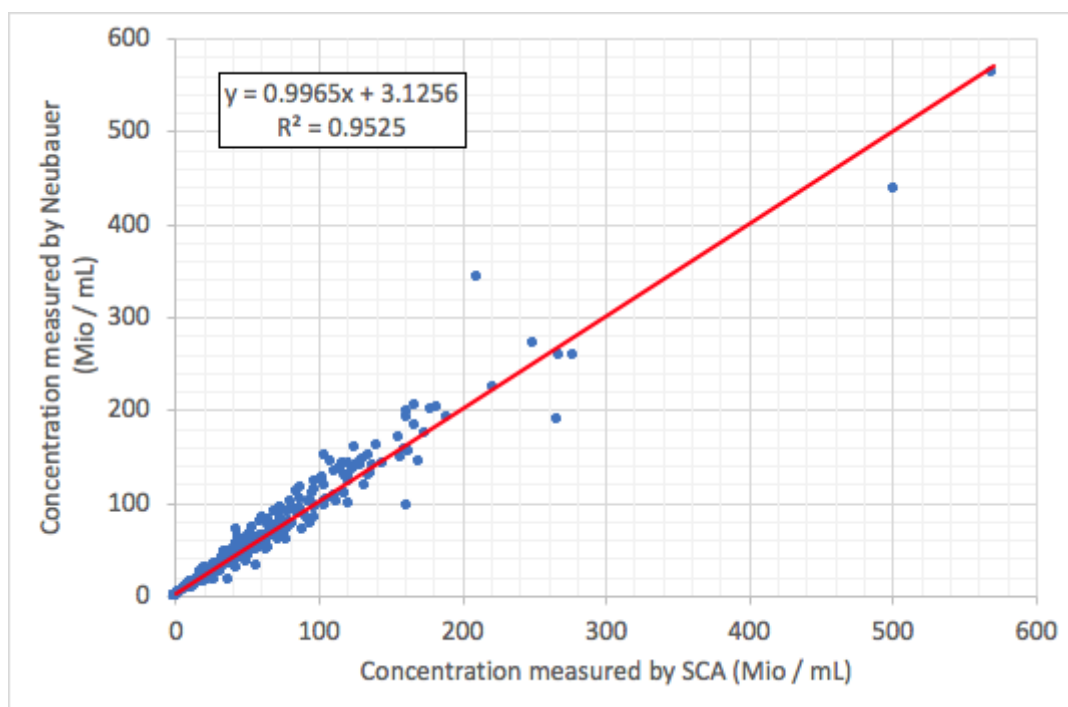
To check the accuracy of the measurements performed with the CASA system by comparing the concentrations measured to that of the Neubauer Improved chamber.

### Material and methods

Sperm concentration was analysed using the CASA system (SCA, Microptic, Spain) and the Neubauer chamber using 289 samples.

- CASA: 5 µL of diluted semen was loaded in a 20 µm deep Leja chamber. Measurement were performed according to document [006: Standard Operating Procedure for SCA](#).
- Improved Neubauer chamber: recommendation of WHO (1,2) were followed.

### Result



See also: [006: SOP for CASA](#)

- (1) WHO laboratory manual for the examination and processing of human semen. Fifth edition. ISBN 978 92 4 154778 9
- (2) Manual cell counting with Neubauer chamber. [See more](#)

End of document