



Finding Mental Health

FACULTY OF MEDICINE
SYNAPSY CENTRE FOR NEUROSCIENCE
AND MENTAL HEALTH RESEARCH



UNIVERSITÉ
DE GENÈVE

Mental Health Disorders

leading
cause
of **disability**
in the world

+28%
during COVID-19

1 in 2 people
concerned **directly**
or **indirectly** at least
once during
their lifetime

1 in 8 people
affected **directly**
or **indirectly**
by a **mental**
disorder

5 trillions
dollars each year

14%
of 10-19 years old
are affected

14,3% deaths
of worldwide

suicide is the **3rd**
leading **cause of death**
for 15-29 year olds

+50%
in war-torn country

Anxiety

Phobia

PTSD

Addiction

Attention
deficit disorder

Behaviour disorder

Schizophrenia

Eating disorder

Hyperactivity

Depression

**Bipolar
disorder**

Autism spectrum
disorder

On a Mission for Mental Health

Mental disorders have a strong impact on humanity and society, without sparing the younger generations. Our lack of knowledge inhibits the emergence of ways to improve life trajectories. The mission of the Synapsy Centre for Neuroscience and Mental Health Research is to address this through research, training and knowledge transfer.

The Power of Synergies

The biological mechanisms of mental disorders remain largely misunderstood. As a result, diagnoses fail to differentiate the great heterogeneity of cases and current treatments address symptoms rather than causes.

Research at the Synapsy Centre aims to **link laboratory findings with clinical observations to advance treatment and diagnosis**. This approach has long been hampered by a lack of collaboration between medical and basic research.

The former Synapsy National Centre of Competences in Research, which gave rise to the Synapsy Centre in 2022, succeeded in bringing these disciplines together through 12 years of **research programmes at the frontiers of both fields**. Technologies to study psychiatric illnesses from all angles have been developed and paramount discoveries have been made.

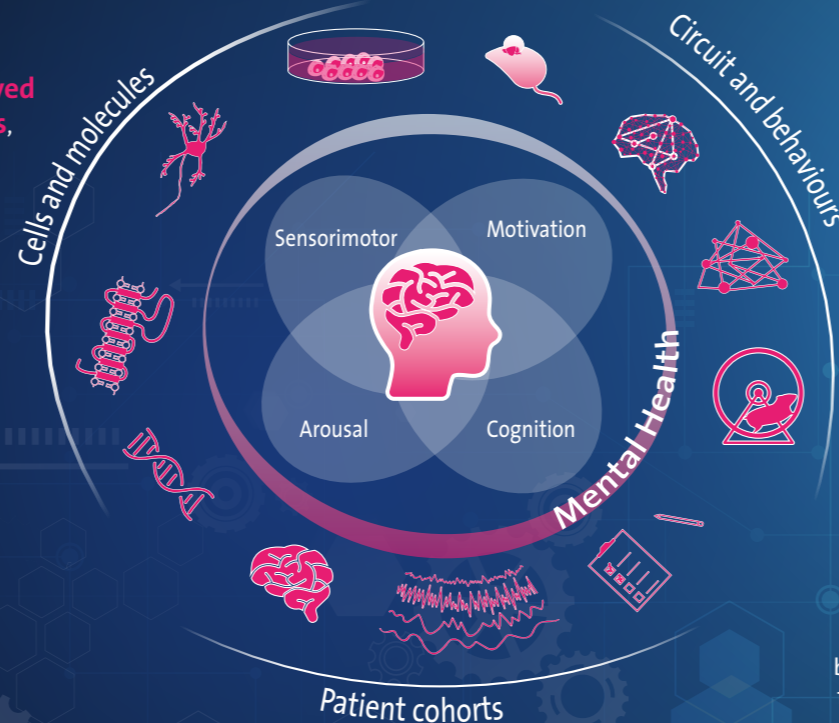
Today, the Synapsy Centre builds on an **experienced scientific community** which position it as a world leader in mental health research.

PSYAT – HUG/UNIGE
NEUFO – UNIGE
Campus Biotech

CNP – CHUV
BMI – EPFL
DNF – UNIL

A State-of-the-art Strategy

In order to identify and **differentiate the mechanisms involved in mental disorders**, the Synapsy Centre addresses four specific brain functions: motivation, cognition, arousal and sensorimotoricity. A wide range of cutting-edge technologies allow to study the brain at different scales: from molecules to behaviour, including neurons and their circuits.



Generating Specialised Researchers

The Synapsy Centre provides **education and training** opportunities for medical and basic science professionals. While the former can develop a research profile in neuroscience, the latter have the opportunity to gain clinical skills. In this way, the Synapsy Centre is making a significant contribution to **the emergence of a new generation of researchers** capable of advancing mental health.

Sweeping Away the Stigma

People with mental health problems, especially young people, are victims of a persistent **stigmatisation** by society. This can lead to **discrimination** and significantly delay access to care services, making it difficult to obtain adequate help. To counter this phenomenon, efforts must be made to remove the sense of **shame** associated with mental disorders.

The Synapsy Center is mobilising to help **destigmatise** mental disorders by transmitting knowledge from research and clinical practice. A platform for the **dissemination of popularised information**, a close relationship with the media and the organisation of public events are its tools for reaching a general audience, health and research communities, as well as decision makers.

Expertise at the Helm

Coordinator: Prof. **Camilla Bellone**, Department of Basic Neurosciences, Faculty of medicine, UNIGE

Vice-coordinator: Prof. **Stefan Kaiser**, Departments of Psychiatry, HUG and Faculty of medicine, UNIGE

Vice-coordinator: Prof. **Stéphan Eliez**, Department of Psychiatry, Faculty of medicine, UNIGE, and Director of the Fondation Pôle Autisme

Support mental health

The Synapsy Centre needs your support to provide all the conditions necessary for the improvement of mental health : very high standards of research and technology, tailor-made training, and a strong commitment to fight stigma.

Your support can take the form of a one-off donation or a multi-year commitment. The needs are great in all areas. You have the possibility of making a donation for research in general, for a specific disorder, for education or to support communication efforts.

For donors who are subject to Swiss tax law, donations are eligible for tax reductions in all cantons. Donations and legacies are collected by the University of Geneva and then transferred to the Synapsy Centre.

Acts of donation are precious marks of solidarity and sharing. Let's join those who act effectively for mental health.

Contact

Synapsy Centre for Neuroscience and Mental Health Research

Campus Biotech – Chemin des Mines 9 – 1202 Genève

contact-synapsy@unige.ch

<https://www.unige.ch/medecine/synapsycentre>

Impressum

© Synapsy Centre for Neuroscience and Mental Health Research

Copywriting : Yann Bernardinelli, lesmotsdelascience.ch

Graphic design and layout : Céline von Tobel, lacivette.ch